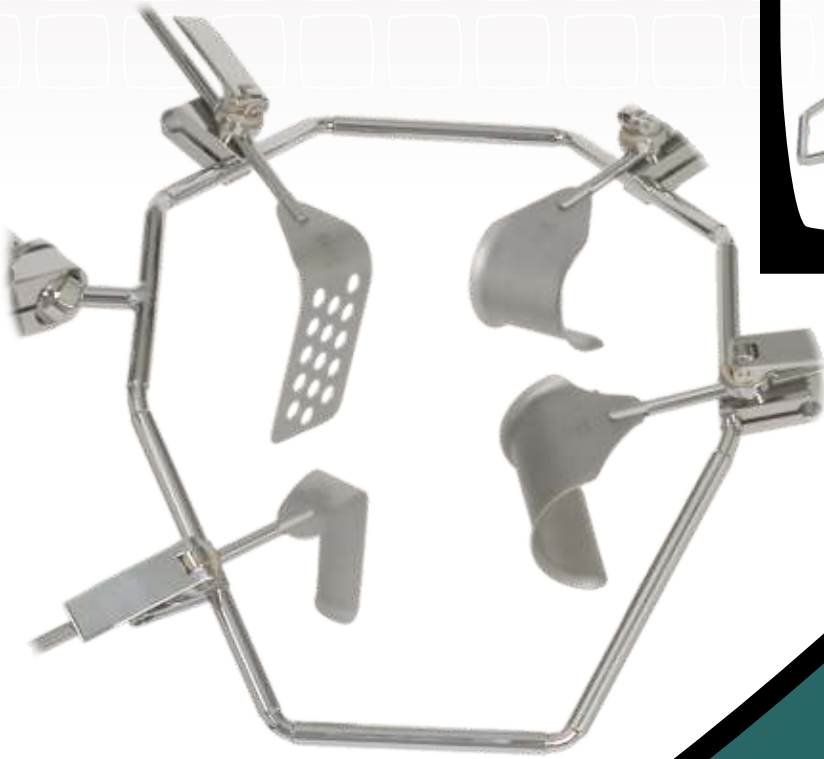


UROLOGIC RETRACTOR

Contoured ring retractor designed specifically for renal surgery.



GRAY SURGICAL

Precision Is Our Business

Manufacturing Quality Retraction
Systems For The Specialist Surgeon

www.sbhsurgical.com

JAS-ANZ



CE

TGA

Patents Apply

Issue - 0102

Code - URB1

Quality

- Unique patented design
- Precision made
- Highest quality
- Superior warranty

Versatility

- Ring can be used with other Gray Surgical Systems
- Superior stability.
- Ease of assembly
- Specialised Renal Vein and Bladder Blade available
- Bevelled Ball design allowing horizontal and vertical maneuverability of the ring
- Contoured design provides maximum exposure during flank (lateral) surgery
- Excellent surgical exposure
- Quick, secure, blade attachment.
- Numerous blade designs offer versatility of retraction
- Customized blade designs available

Convenience

- Eliminates the need for manual retraction
- Multiple Blade configurations
- Independent adjustment of components during surgery

Components



Table Clamp
-code GT01
inc 10 Teflon Insulators
-code TE01



Easy Clamps
-code EC01 (Metric)
-code EC03 (Imperial)



Horizontal Arm
-Double Cam -code OHA01
-Single Cam -code GHA01



Urologic Ring
-code UA01 (Metric)
-code UA01I (Imperial)



Coupling Clamp
-code CC01

Blades - complete range available - refer to Blades Brochure

For complete range of Gray Surgical Products please see our website at www.graysurgical.com

Patents Apply



Your Local Distributor:
Strategic Business Holdings, Inc.
...quality products, superior customer service & support

Tel: 800.303.3050 Fax: 949.600.8874



GRAY SURGICAL

Please refer to our website for Warranty and Care and Maintenance guidelines of Gray Surgical Equipment.
For more information on Gray Surgical Retractor Systems please contact your local distributor or visit our website

9620 Research Dr. Irvine, Ca 92618 USA
www.surgical.com info@surgical.com